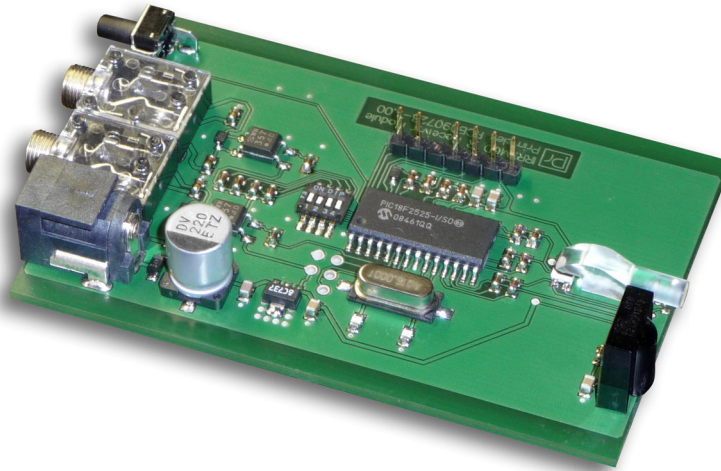


IRRXMOD

Universal IR Remote Control Receiver Module



General Description

The IRRXMOD is a versatile module which allows turning on and off up to two AC mains inrush current limiters IRCLIM10 by using virtually any IR remote control.

The IRRXMOD is programmable to learn the codes of virtually any IR remote control. Programming is very easy and user friendly: Pushing the button at the rear panel of the IRRXMOD enters the learn mode. Now just use your remote control and press the button you want to use with the IRRXMOD – that's all.

Up to three different codes are programmable. The codes '1' and '2' are used to control the respective IRCLIM10 separately and code '3' may be used to control both IRCLIM10 concurrently.

A multicolor LED at the front panel of the IRRXMOD indicates the status during normal operation and learn mode. The IRRXMOD is powered by a wall power supply (9VDC / 100mA).

Typical Applications

- Remote power on / off of two monoblock audio amplifiers

Key Specifications

- DC power supply 9V ... 15V, power consumption < 1W
- 3.5mm jack connectors for control outputs
- 6.3 / 2.5mm power jack
- Outline dimensions = 79 x 51 x 15mm (w x d x h)

Main Features

- Usable with virtually any IR remote control, e.g. from audio / video components
- Very easy to program IR codes
- Multicolor LED for status indication
- Galvanic isolated control outputs
- Customized designs available, contact Primelec for further information

Further details are TBD... Please check later for an updated datasheet!